



Bertec[®] Portable Force Plates

Bertec[®] force plates are designed for gait, balance research, and performance analyses. Our patented strain gauge technology, innovative transducer designs, and quality manufacturing help you capture the highly accurate data needed for your research.

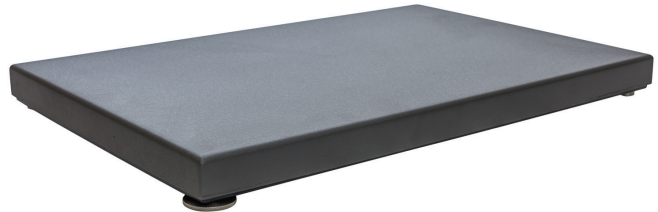
- Highly accurate force and center of pressure measurements
- Negligible crosstalk, drift, and signal interference allows for confidence in your data
- Custom electronics immediately process analog signals into digital data to prevent degradation
- Portable force plate options in a variety of sizes and load ranges
- 1-year standard warranty for portable plates
- Can be integrated with all major motion capture systems for synchronized recordings



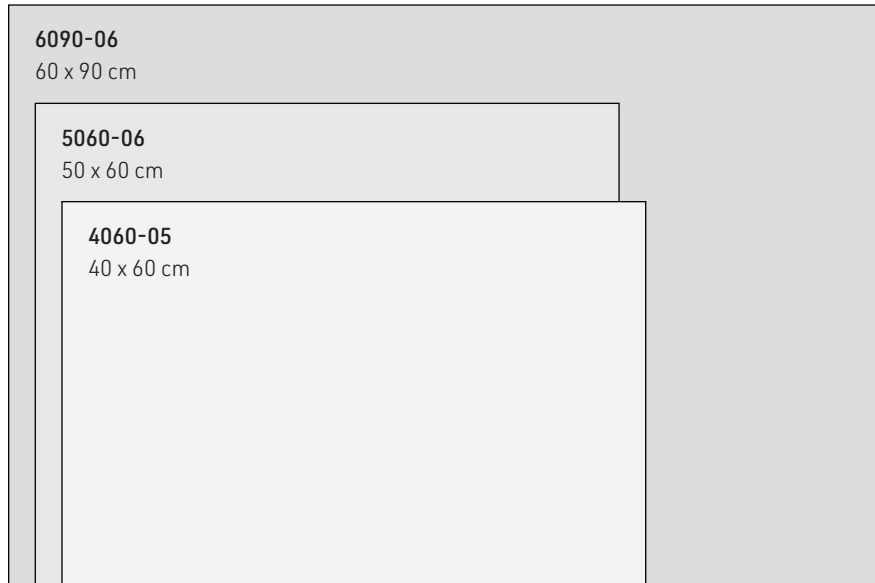
Dual Configuration with Foam Surround

Reliable Data Collection

- Up to 2000 (10000) lb (N) load capacity for different applications including gait analysis, jump analysis, balance research, and other sports performance research
- Six-component force output and Center of Pressure (CoP)
- Plug portable plate output directly into standard USB port
- Allows data collection in more natural environments



Models



Options

- Choice of amplifier – digital, analog, or dual digital/analog output
- Digital acquisition software
- Mounting plate or bracket available
- Foam surround* for injury prevention
- Rolling carrying case*

*5060-06 models

For more information, contact Bertec at +1 614-543-8099 or by email at info@bertec.com